

## Full Colour Printed Presentation Box with Window

Compliment your mug with our new mug packaging range. Choose from Pantone matched boxes, flooded with your pantone colour and screen print branding, or vivid full colour boxes. Both are available with or without a display window, printed to order and from just 72 pieces.



### Key Product Information

Product Code:	MP0026
MOQ:	72
Size:	See Artwork Requirements
Available Thickness:	2mm
Branding Area:	Within dimensions
Branding Method:	4 Colour Process
Material:	Cardboard
Made In:	UK
PDF Proof:	24-48 Hours
Express Service Available:	Not Available
Printed Proof Leadtime:	5 Working days
Leadtime:	15 Working days from proof approval
Colour:	White
Weight:	43g
Capacity:	N/A

### Packaging and Other Information

No Per Carton:	250 when supplied flat packed
Packaging Details:	475 x 350 x 340mm when supplied flat packed
Carton Weight:	12Kg when supplied flat packed
Standard Packaging:	Bulk Packed
Alternative Packaging:	N/A

### Recommendations and Limitations

This is a presentation box only and is not suitable for use as a mailing carton

Ideal For: Trade Exhibitions, Cafés / Coffee Bars, Corporate Giveaways, Desktop Promotions

## Full Colour Printed Presentation Box with Window

Sizes available: 115 x 85 x 105mm (Window 109 x 60mm)

Full colour:

- All graphics should be supplied as high resolution CMYK files at a minimum of 300dpi
- All design components must be supplied and clearly identified. This includes Tiff, EPS and PDF files; all printer fonts used in the main file & imported graphics.

Regardless of print method:

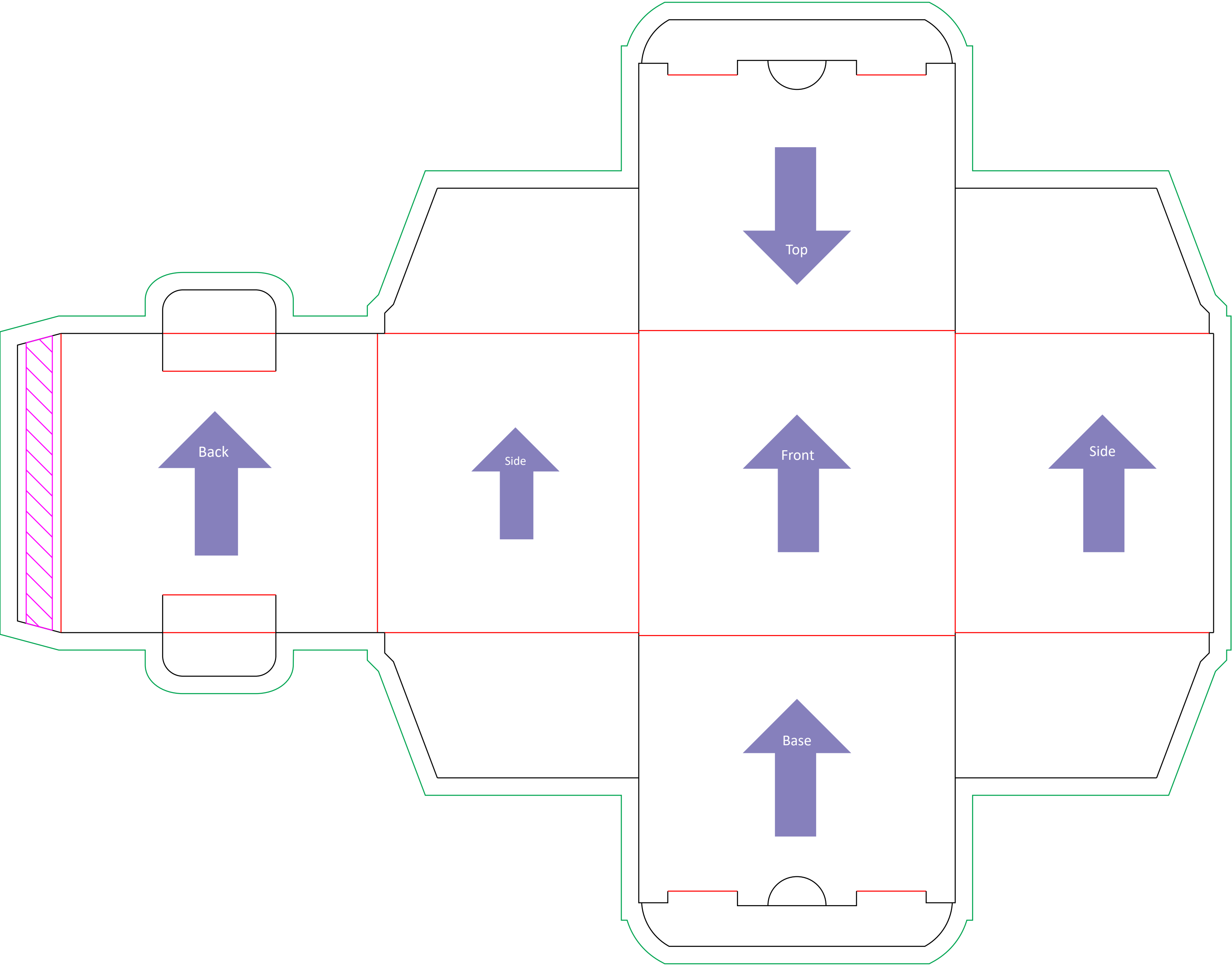
- Allow 5mm bleed all around the design.
- Artwork to be emailed with your order number and company name in the reference line or supplied on CD with same information clearly labelled.

Full detailed guidelines including limitations & recommendations are available for each printing method on request.

QR Codes - Please note that the print process and substrates used in the production of this item may not always allow QR codes, if present on your artwork, to function correctly. When approving your proof, you are accepting that this may be the case and as such accept full liability for any malfunction of the QR code.

See the following page(s) for the artwork templates for this product.

All information correct at time of publication. Whilst we endeavour to maintain the accuracy of this document, details may change without notice.



Full Colour Mug Box - 11oz Durham

Tool No: 4817  
Shape: Box

Product Size -  
Width: 319mm  
Height: 412mm

Artwork with Bleed -  
Width: 325mm  
Height: 418mm

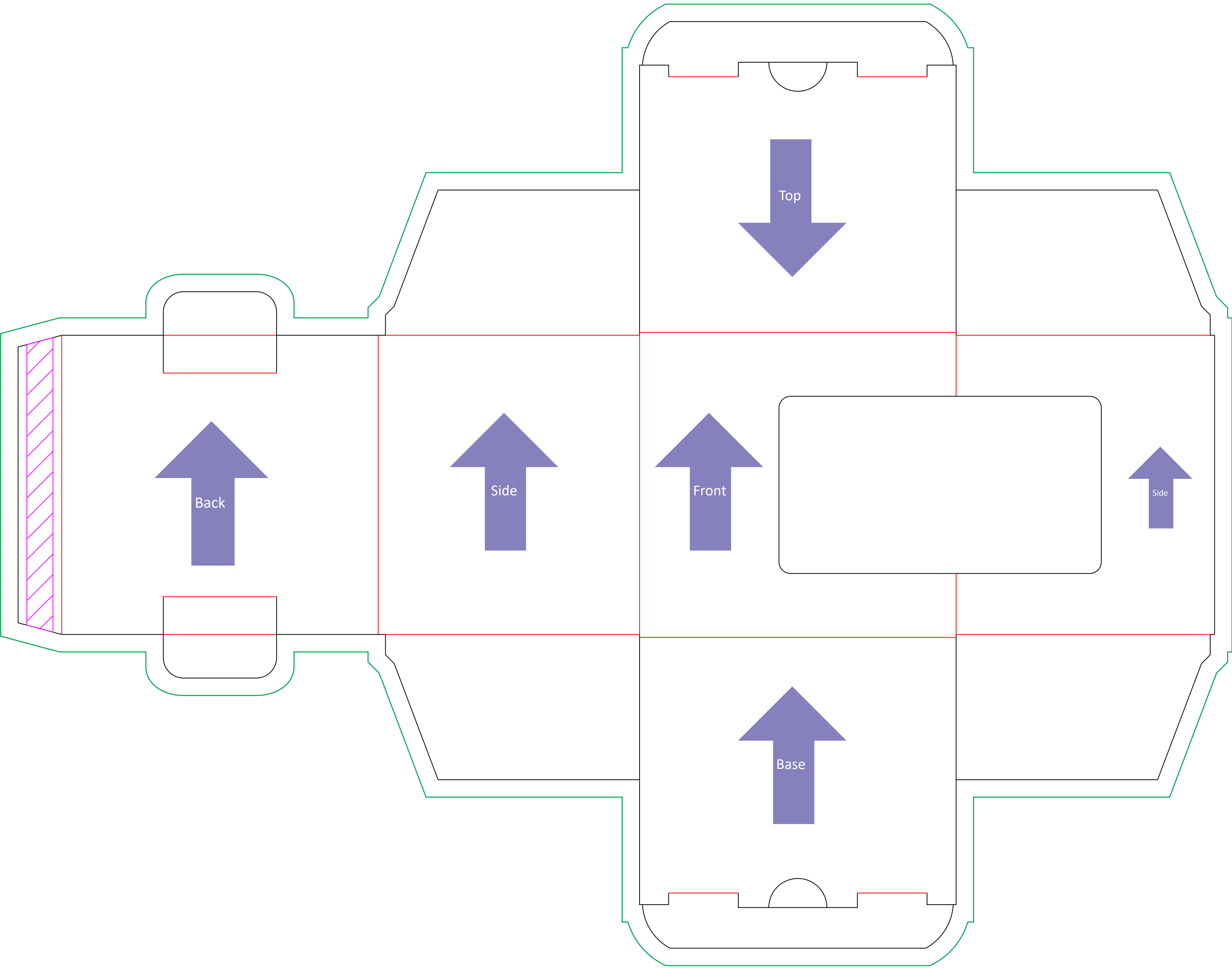
--- Please keep all live matter such as text, logos and other important images within this area.

Individual clipping masks for each panel. These are for use if design doesn't overlap sides. If in doubt about this aspect please call for advice.

Arrows show artwork orientation for each section. Text explains recommended print in flap areas.

This is a layered file, and is best used in **illustrator**. Place artwork on bottom layer named "Artwork".

This dieline represents a current finishing tool. Any alterations to this dieline may incur additional charges.



Full Colour Mug Box with Window  
11oz Durham

Tool No:	4766
Shape:	Box
Product Size -	
Width:	319mm
Height:	412mm
Artwork with Bleed -	
Width:	325mm
Height:	418mm

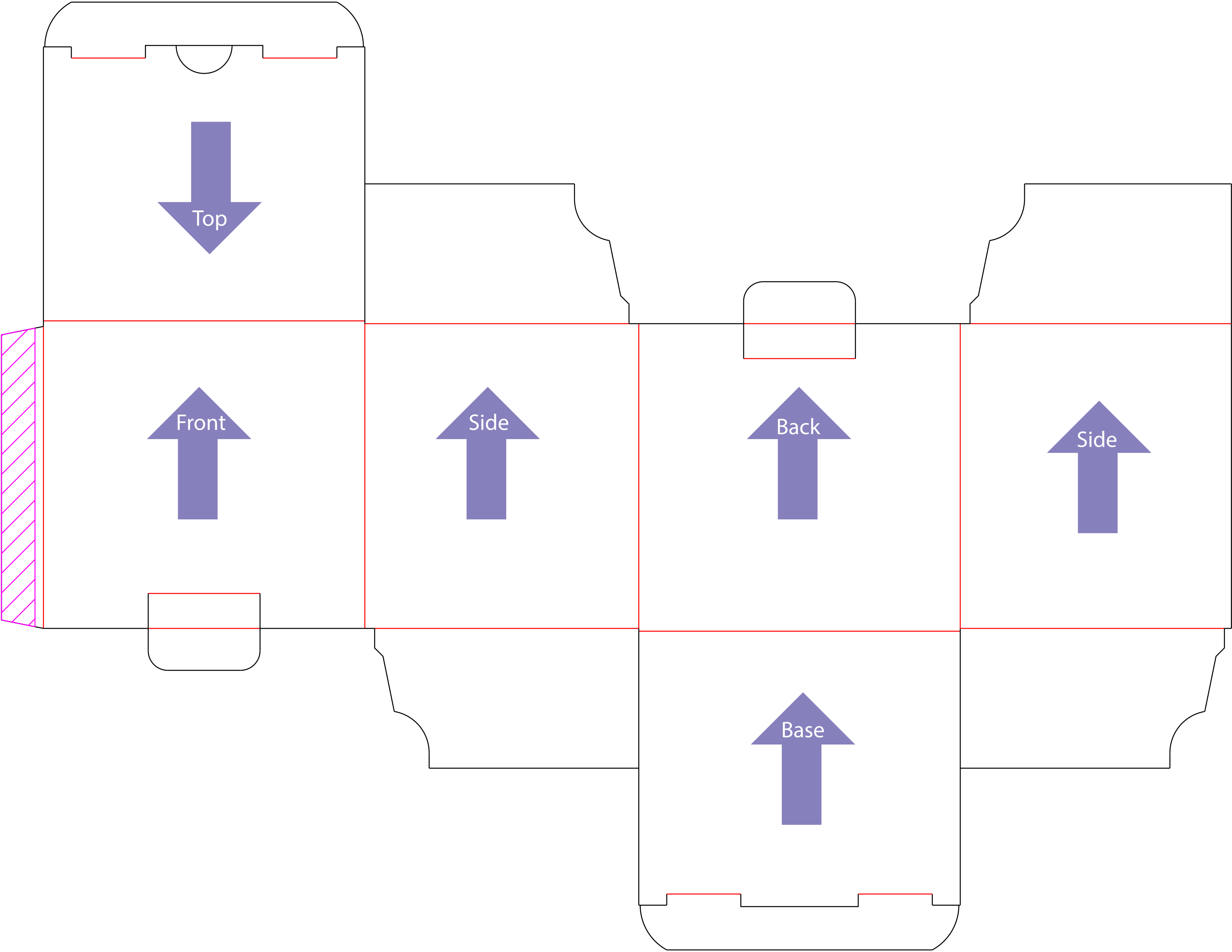
--- Please keep all live matter such as text, logos and other important images within this area.

Individual clipping masks for each panel. These are for use if design doesn't overlap sides. If in doubt about this aspect please call for advice.

Arrows show artwork orientation for each section. Text explains recommended print in flap areas.

This is a layered file, and is best used in illustrator. Place artwork on bottom layer named "Artwork".

This dieline represents a current finishing tool. Any alterations to this dieline may incur additional charges.



Full Colour Latte Mug Box  
2mm thick card

Tool No:	4758
Shape:	Box
Product Size -	
Width:	339mm
Height:	440mm
Artwork with Bleed -	
Width:	345mm
Height:	446mm

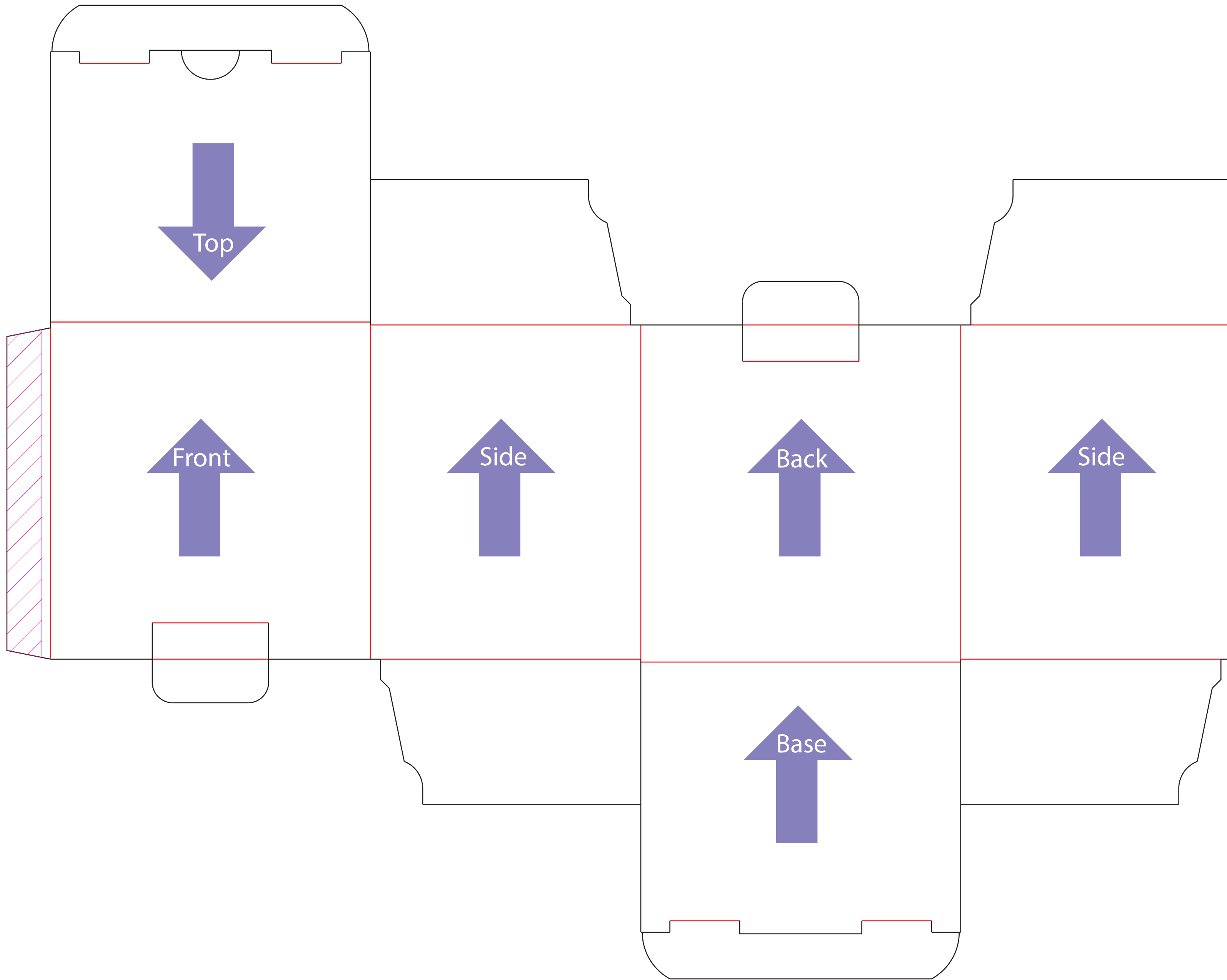
--- Please keep all live matter such as text, logos and other important images within this area.

Individual clipping masks for each panel. These are for use if design doesn't overlap sides. If in doubt about this aspect please call for advice.

Arrows show artwork orientation for each section. Text explains recommended print in flap areas.

This is a layered file, and is best used in illustrator. Place artwork on bottom layer named "Artwork".

This dieline represents a current finishing tool. Any alterations to this dieline may incur additional charges.



Full Colour Marrow Mug Box  
2mm Thick Card

Tool No:	4755
Shape:	Box
Product Size -	
Width:	335mm
Height:	420mm
Artwork with Bleed -	
Width:	341mm
Height:	426mm

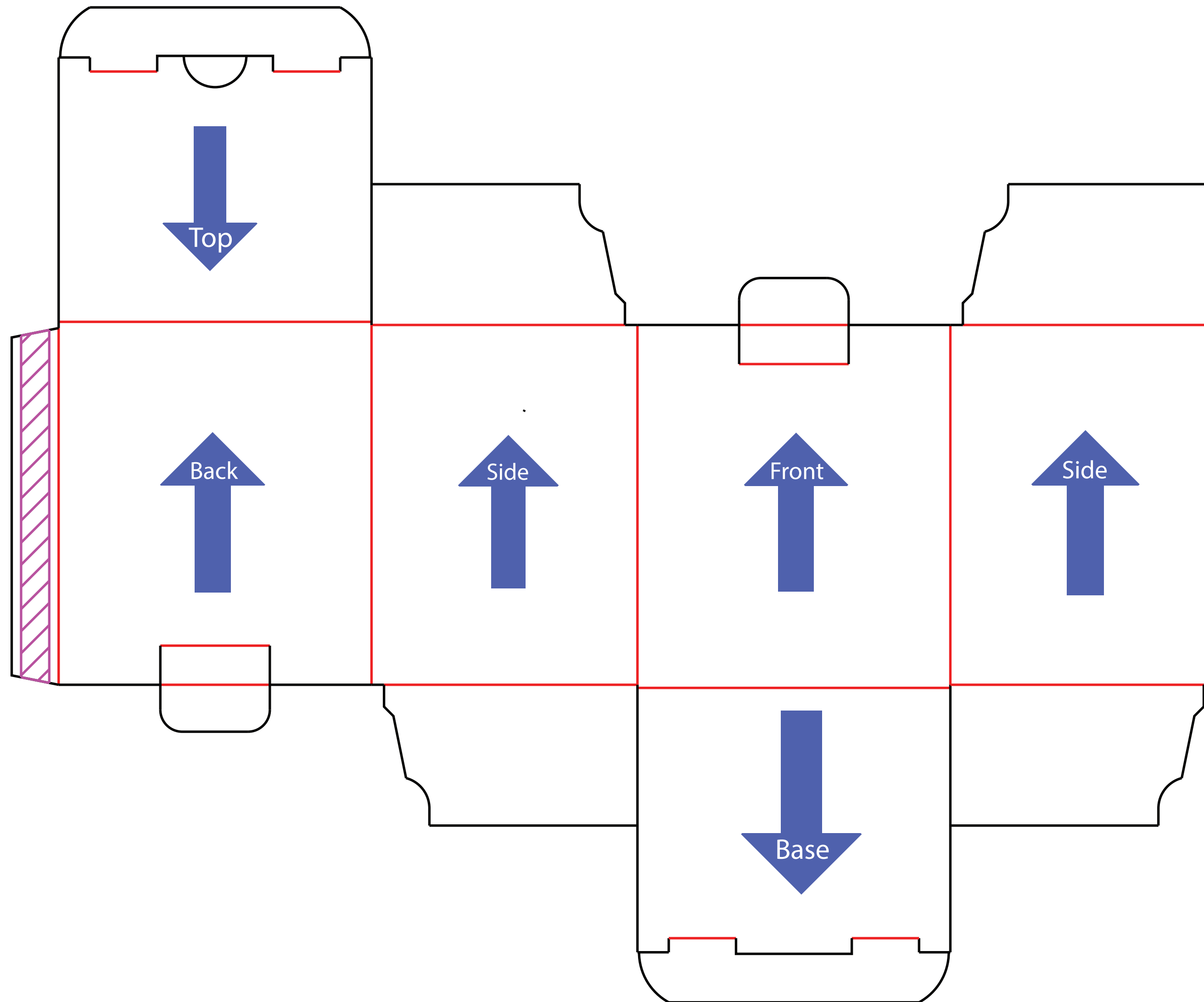
--- Please keep all live matter such as text, logos and other important images within this area.

Individual clipping masks for each panel. These are for use if design doesn't overlap sides. If in doubt about this aspect please call for advice.

Arrows show artwork orientation for each section. Text explains recommended print in flap areas.

This is a layered file, and is best used in illustrator. Place artwork on bottom layer named "Artwork".

This dieline represents a current finishing tool. Any alterations to this dieline may incur additional charges.



Full Colour Windsor Mug  
Box 2mm Thick

Tool No: 4761  
Shape: Box

Product Size -  
Width: 318mm  
Height: 384mm

Artwork with Bleed -  
Width: 324mm  
Height: 390mm

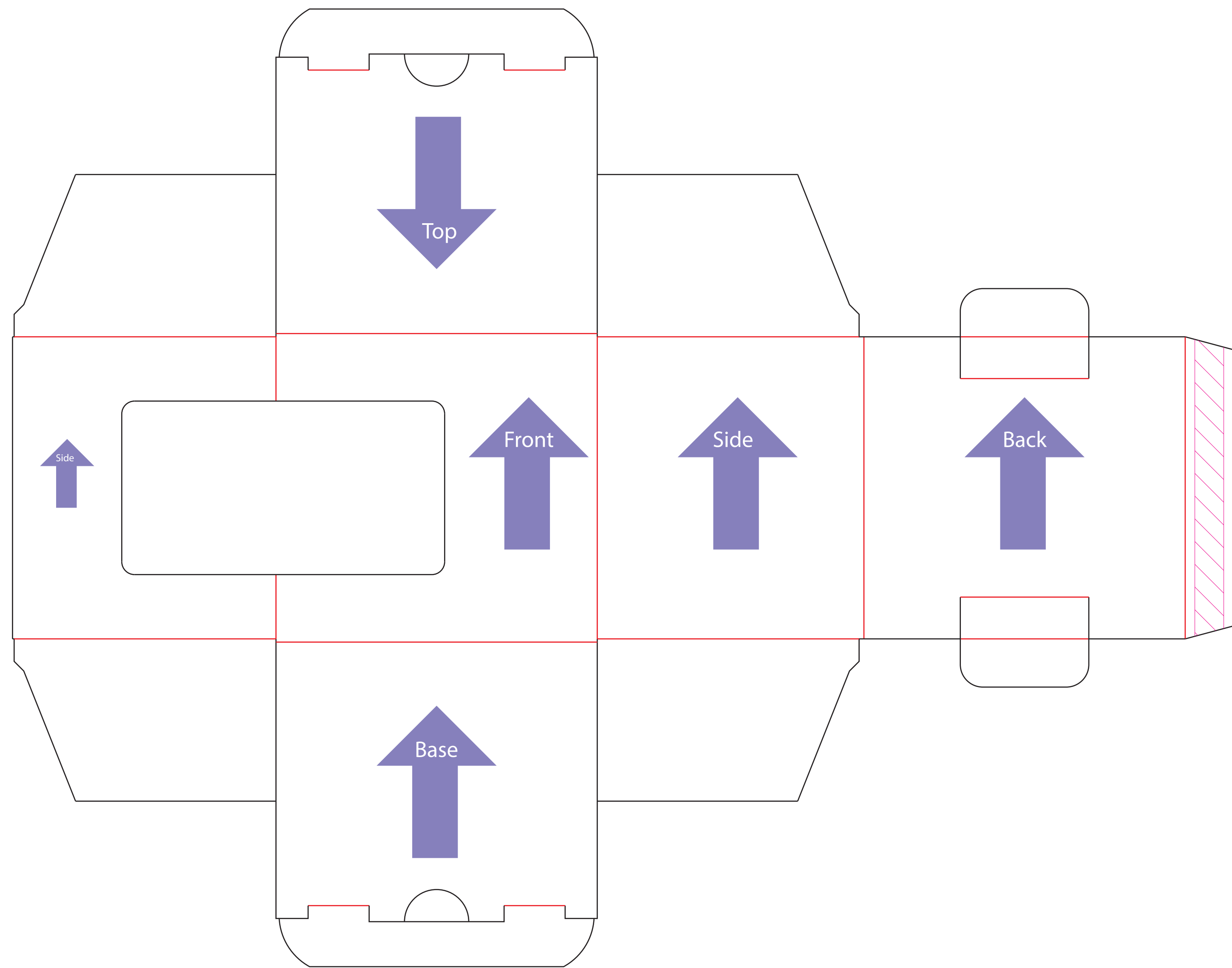
--- Please keep all live matter such as text, logos and other important images within this area.

Individual clipping masks for each panel. These are for use if design doesn't overlap sides. If in doubt about this aspect please call for advice.

Arrows show artwork orientation for each section. Text explains recommended print in flap areas.

This is a layered file, and is best used in illustrator. Place artwork on bottom layer named "Artwork".

This dieline represents a current finishing tool. Any alterations to this dieline may incur additional charges.



Full Colour Mini Marrow Mug Box  
With Window 2mm Thick Card

Tool No:	4796
Job No:	123465
Shape:	Box
Product Size -	
Width:	380mm
Height:	298mm
Artwork with Bleed -	
Width:	390mm
Height:	308mm

--- Please keep all live matter such as text, logos and other important images within this area.

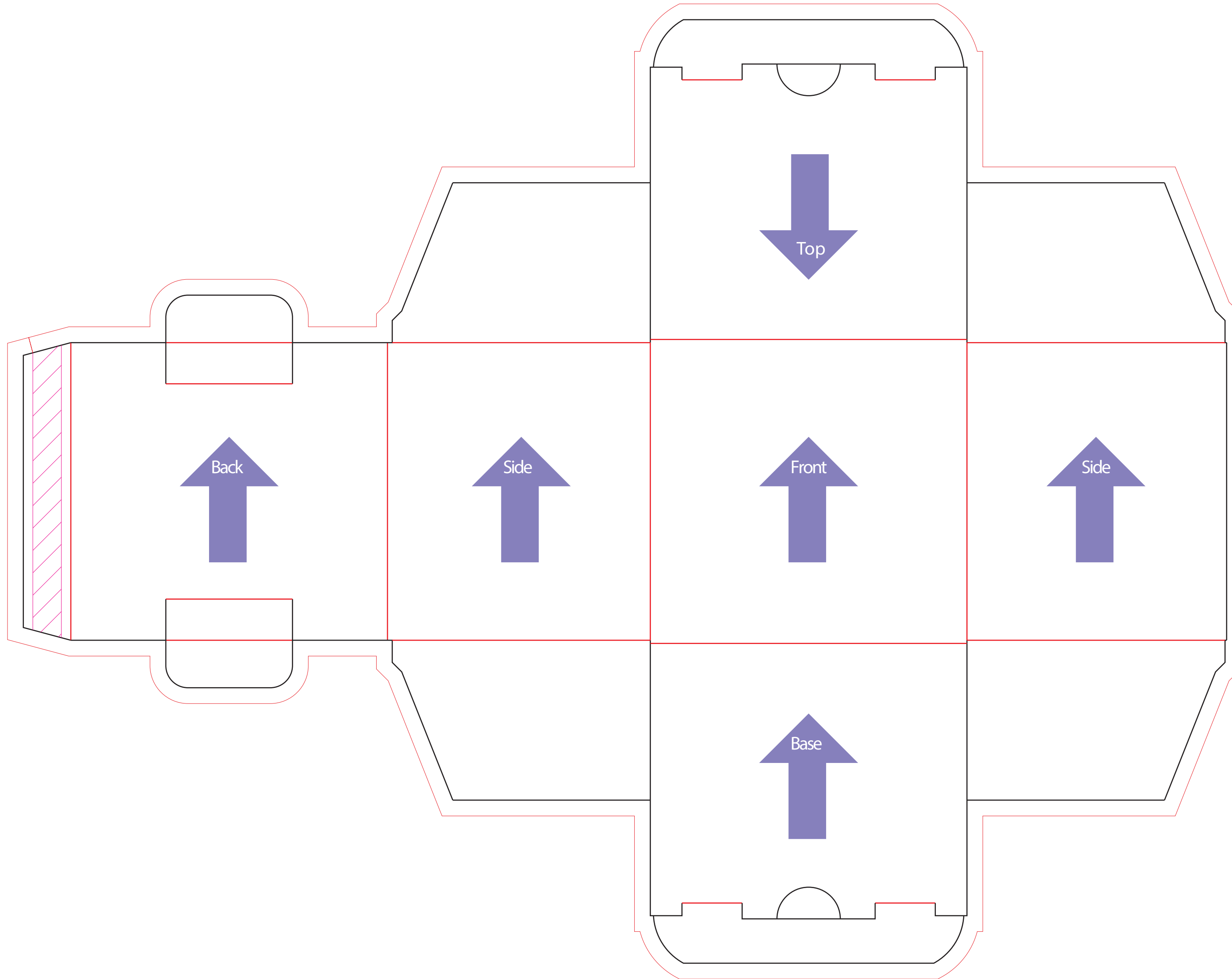
Individual clipping masks for each panel. These are for use if design doesn't overlap sides. If in doubt about this aspect please call for advice.

Arrows show artwork orientation for each section. Text explains recommended print in flap areas.

This is a layered file, and is best used in illustrator. Place artwork on bottom layer named "Artwork".

This dieline represents a current finishing tool. Any alterations to this dieline may incur additional charges.





**Full Colour Mini Marrow Mug Box**  
**2mm Thick Card**

**Tool No:** 4785

**Job No:** ????

**Shape:** Box

**Product Size -**

**Width:** 380mm

**Height:** 298mm

**Artwork with Bleed -**

**Width:** 390mm

**Height:** 308mm

**--- Please keep all live matter such as text, logos and other important images within this area.**

**Individual clipping masks for each panel. These are for use if design doesn't overlap sides. If in doubt about this aspect please call for advice.**

**Arrows show artwork orientation for each section. Text explains recommended print in flap areas.**

**This is a layered file, and is best used in illustrator. Place artwork on bottom layer named "Artwork".**

**This dieline represents a current finishing tool. Any alterations to this dieline may incur additional charges.**