

StickyMat

Exceptionally thin non-slip, light weight mouse mat constructed from an adhesive base and mark resist PVC top. Release the backing paper to expose the adhesive base which can be literally stuck to the desk but easily removed and re-positioned over and over again. Ideal for mailings and maximum promotional exposure.



Key Product Information

Product Code:	11023
Commodity Code:	39269092
MOQ:	100
Size:	See Artwork Requirements
Available Thickness:	0.5mm
Branding Area:	Within dimensions
Branding Method:	Screen Print or 4 Colour Process
Material:	Adhesive base and mark resist PVC top
Made In:	UK
PDF Proof:	24-48 Hours
Express Service	Not Available
Available:	
Printed Proof Leadtime:	3 Working days
Leadtime:	10 Working days from proof approval
Colour:	N/A
Weight:	34g

Packaging and Other Information

No Per Carton:	800
Packaging Details:	405 x 340 x 220mm
Carton Weight:	27.2Kg
Standard Packaging:	Bulk Packed
Alternative Packaging:	Mailing Sleeves, Shrink Wrapped, Bag with Header Card, Envelope

Recommendations and Limitations

As with all products with an adhesive base, we do not recommend sticking this mat to a natural wood or highly varnished surface.

Ideal For: Postal Campaigns, IT Companies, Educational Organisations, Pharmaceutical, Recruitment

StickyMat

Sizes available: Rectangle 200mm x 235mm, Square 200mm x 200mm, Oval 200mm x 235mm, Circle 200mm diameter, House 230mm x 195mm, Heart 200mm x 235mm, Phone 233mm x 185mm, T-Shirt 220mm x 200mm, Truck 200mm x 210mm, Hexagon 230mm x 200mm, Laptop 200mm x 235mm, Pillow 200mm x 235mm

Screen Print:

- Editable EPS file
- Image saved at 100% size or larger
- Pantone® references supplied for colours
- Fonts supplied or text saved as curves

Full colour:

- All graphics should be supplied as highresolution CMYK files at a minimum of 300dpi
- All design components must be supplied and clearly identified. This includes Tiff, EPS and PDF files; all printer fonts used in the main file & imported graphics.

Regardless of print method:

- Allow 10mm bleed all around the design.
- Artwork to be emailed with your order number and company name in the reference line or supplied on CD with same information clearly labelled.

Full detailed guidelines including limitations & recommendations are available for each printing method on request.

QR Codes - Please note that the print process and substrates used in the production of this item may not always allow QR codes, if present on your artwork, to function correctly. When approving your proof, you are accepting that this may be the case and as such accept full liability for any malfunction of the QR code.

See the following page(s) for the artwork templates for this product.

All information correct at time of publication. Whilst we endeavour to maintain the accuracy of this document, details may change without notice.



Standard Mat

Tool No: 235
Shape: Rectangle

Cut Size -

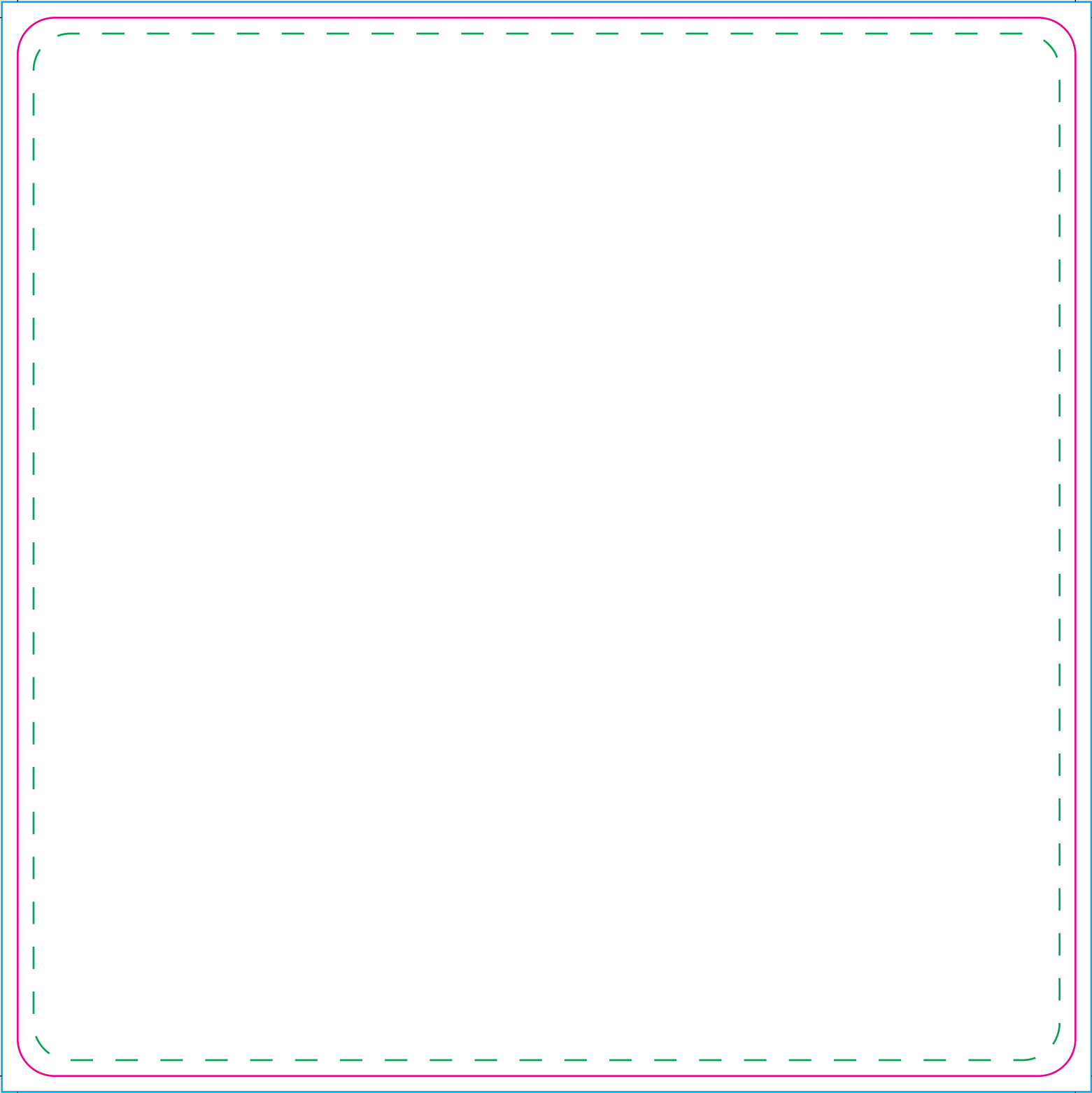
Width: 235mm
Height: 200mm

Artwork with Bleed -

Width: 241mm
Height: 206mm

- - - Please keep all live matter such as text, logos and other important images within this area.

This dieline represents a current finishing tool. Any alterations to this dieline may incur additional charges.

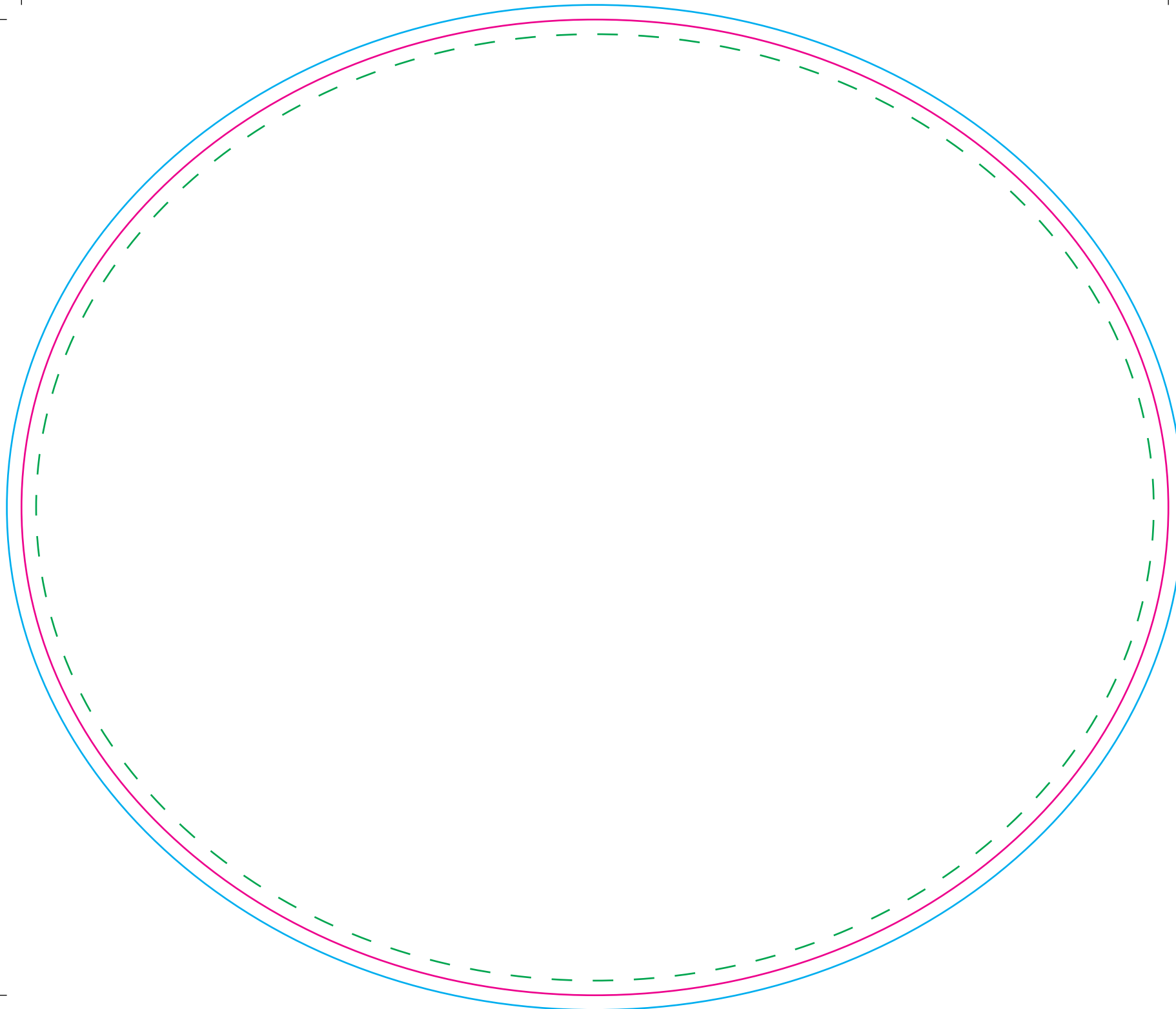


Mat

Tool No:	867 & DC0006
Shape:	Square
Cut Size -	
Width:	200mm
Height:	200mm
Artwork with Bleed -	
Width:	206mm
Height:	206mm

- - - Please keep all live matter such as text, logos and other important images within this area.

This dieline represents a current finishing tool. Any alterations to this dieline may incur additional charges.



Mat

Tool No: 1090 & DC0173

Shape: Oval

Cut Size -

Width: 235mm

Height: 200mm

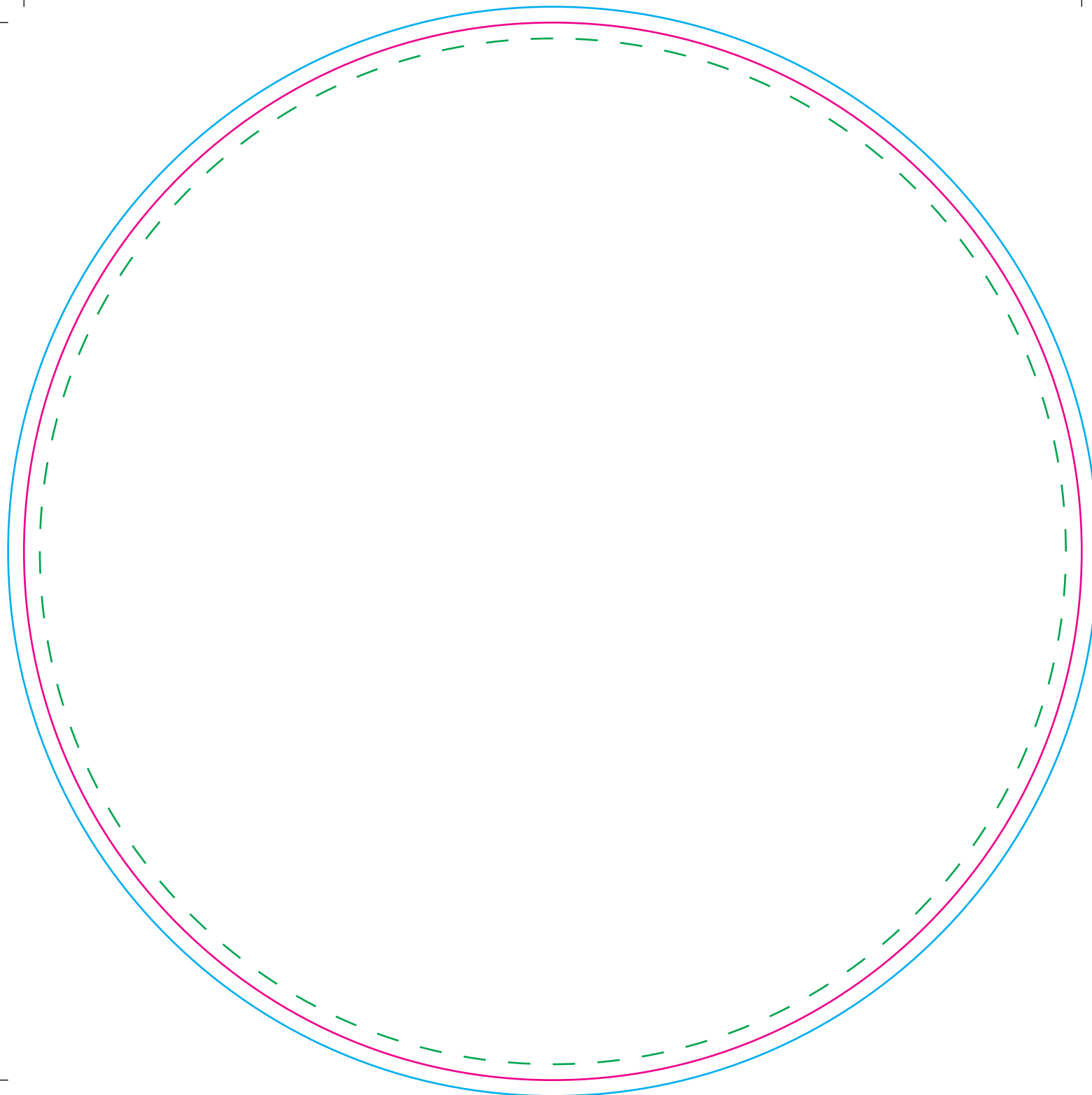
Artwork with Bleed -

Width: 241mm

Height: 206mm

- - - Please keep all live matter such as text, logos and other important images within this area.

This dieline represents a current finishing tool. Any alterations to this dieline may incur additional charges.



Mat

Tool No: 862 & DC0005

Shape: Circle

Cut Size -

Width: 200mm

Height: 200mm

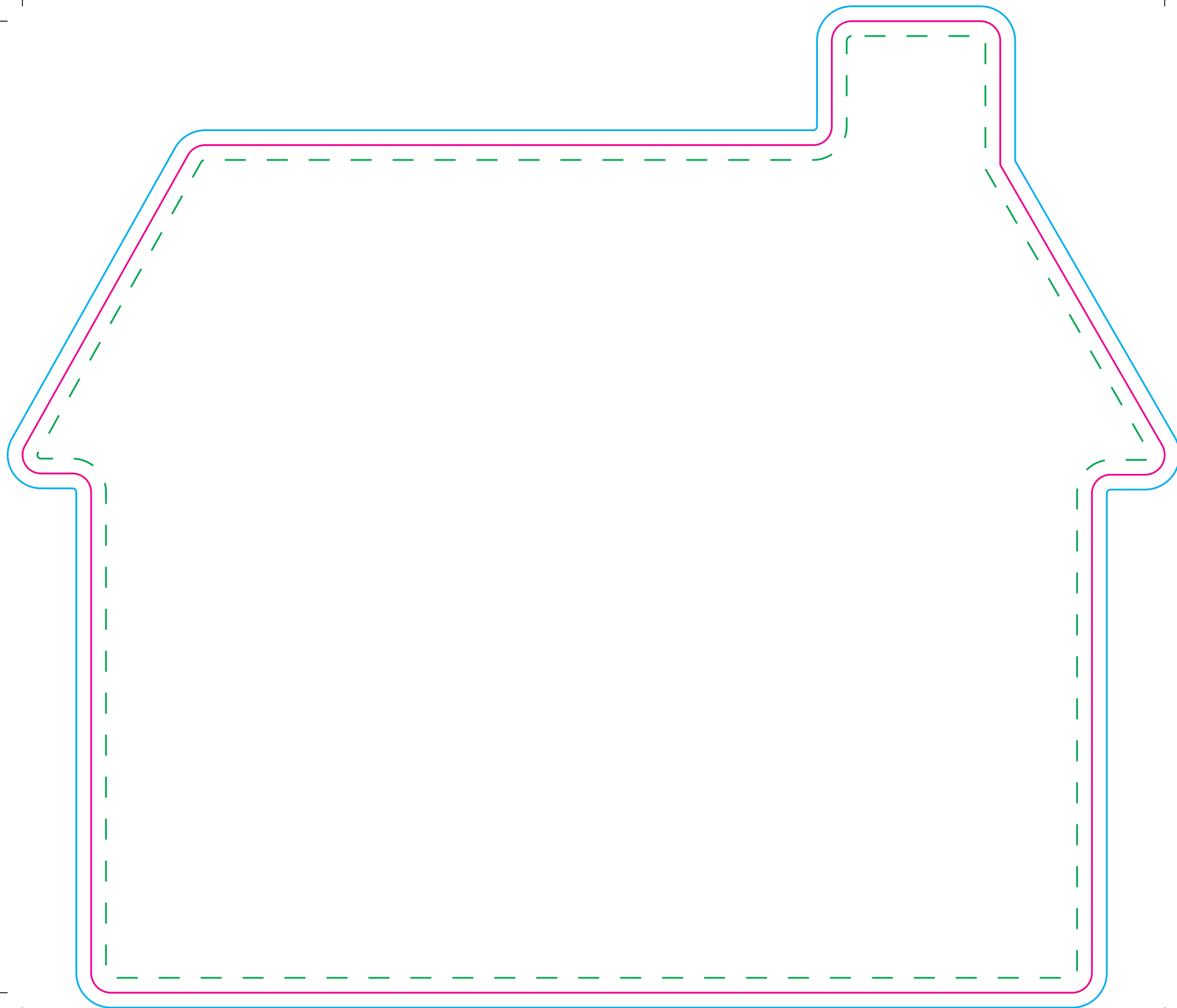
Artwork with Bleed -

Width: 206mm

Height: 206mm

- - - Please keep all live matter such as text, logos and other important images within this area.

This dieline represents a current finishing tool. Any alterations to this dieline may incur additional charges.

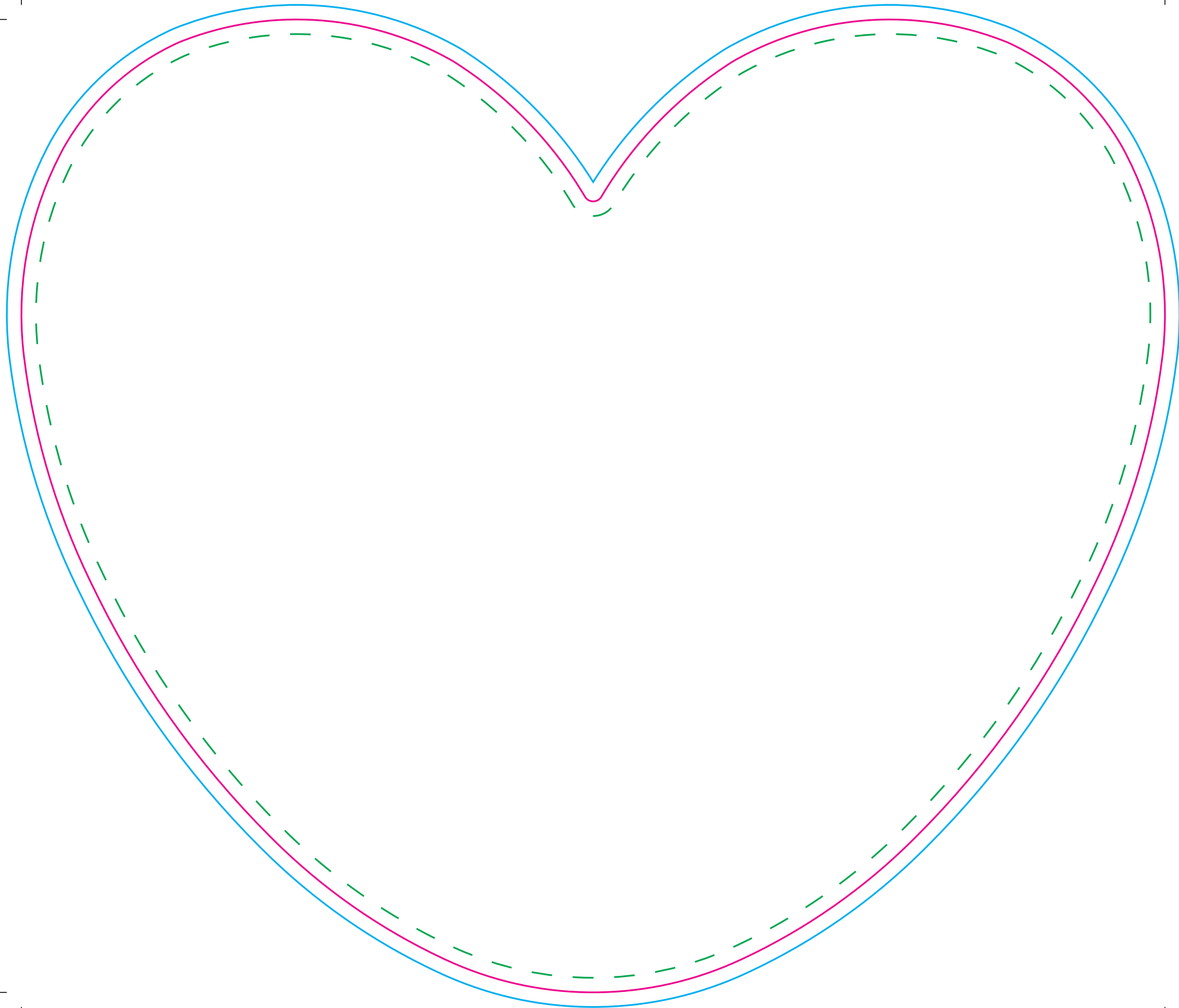


Mat

Tool No:	3591 & DC0221
Shape:	House - Chimney Right
Cut Size -	
Width:	230.5mm
Height:	196mm
Artwork with Bleed -	
Width:	236.5mm
Height:	202mm

- - - Please keep all live matter such as text, logos and other important images within this area.

This dieline represents a current finishing tool. Any alterations to this dieline may incur additional charges.



Mat

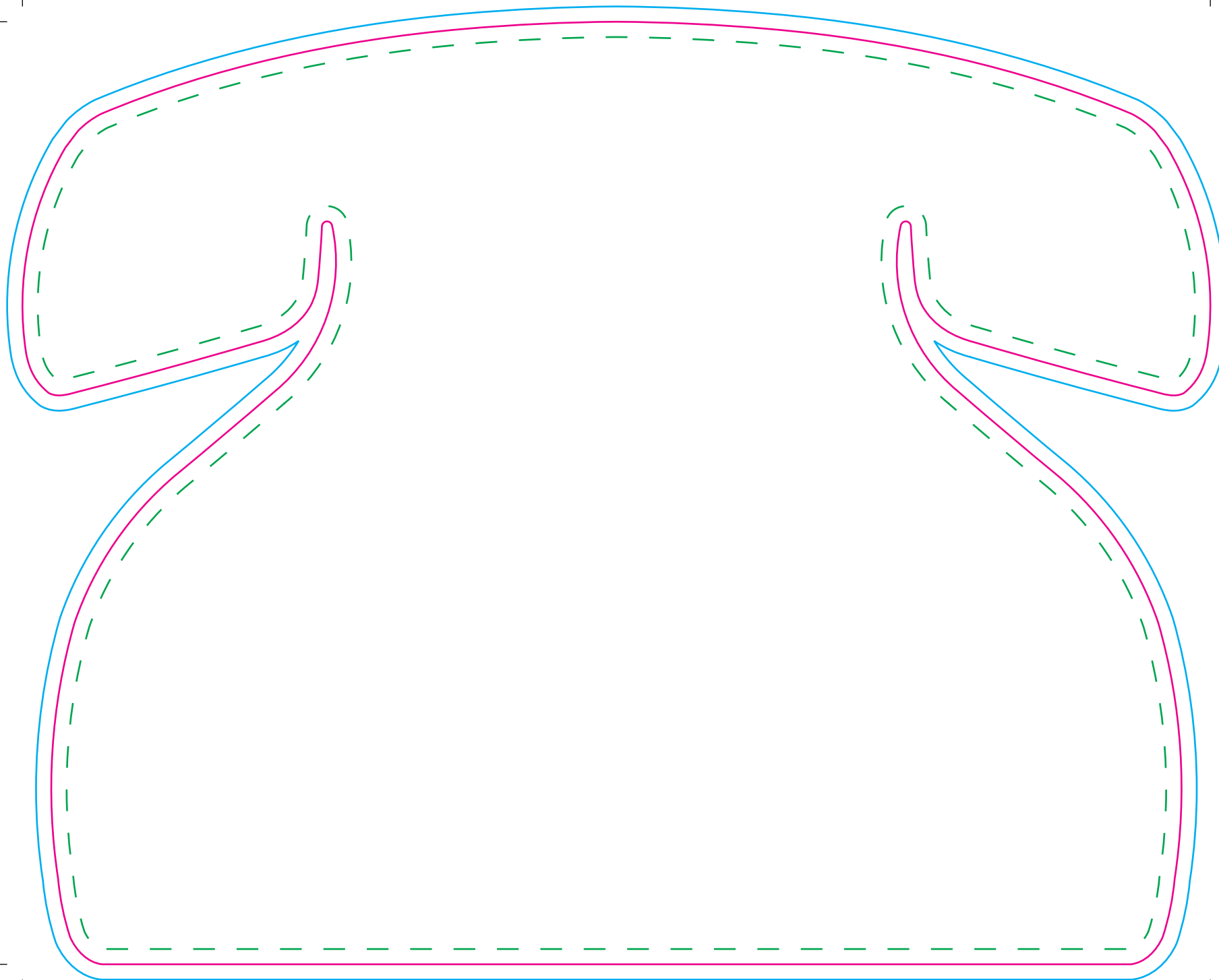
Tool No: 3489 & DC0312
Shape: Heart

Product Size -
Width: 235mm
Height: 200mm

Artwork with Bleed -
Width: 241mm
Height: 206mm

- - - Please keep all live matter such as text, logos and other important images within this area.

This dieline represents a current finishing tool. Any alterations to this dieline may incur additional charges.



Mat

Tool No: 2423 & DC0067

Shape: Telephone

Cut Size -

Width: 233mm

Height: 185mm

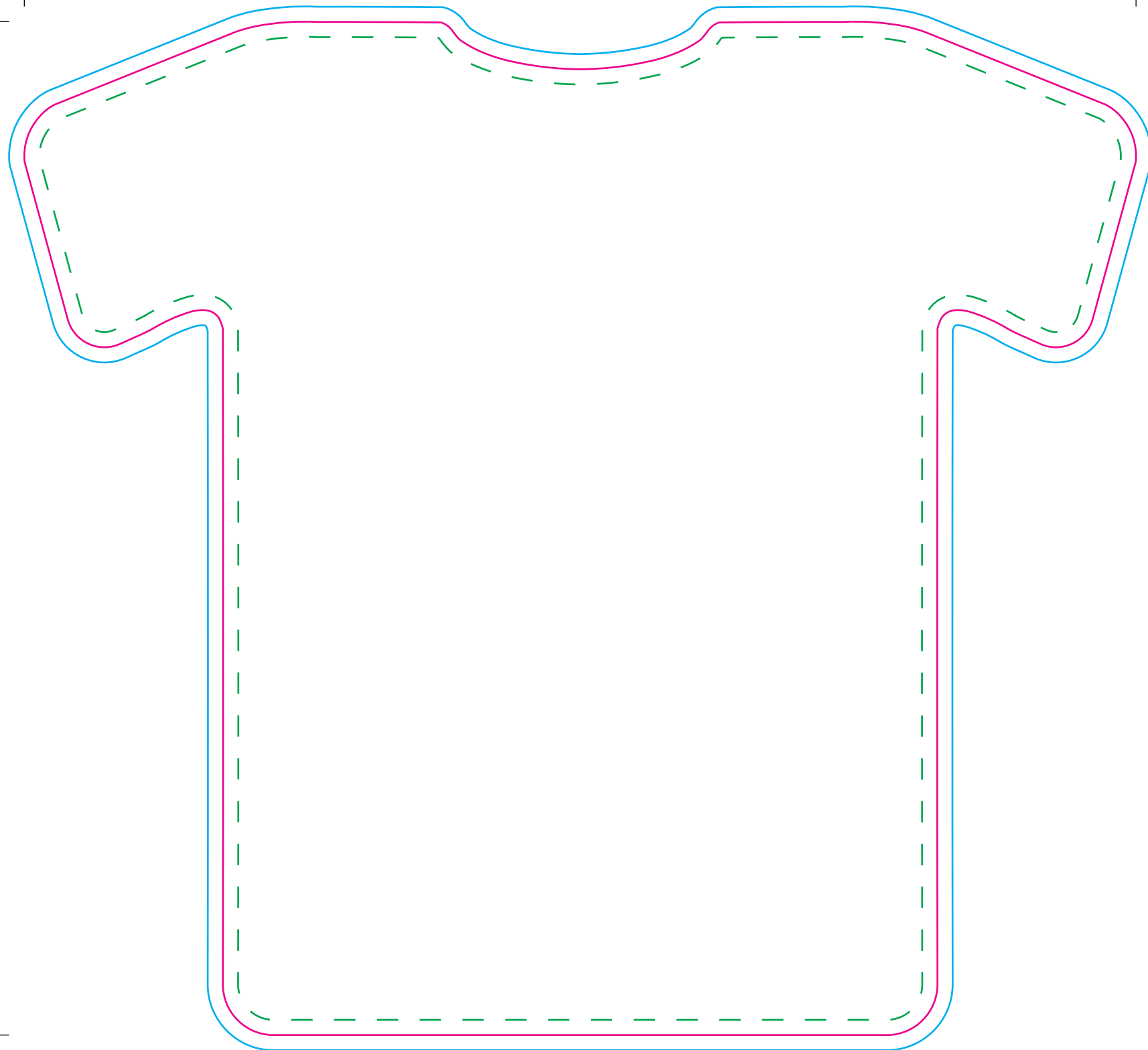
Artwork with Bleed -

Width: 239mm

Height: 191mm

- - - Please keep all live matter such as text, logos and other important images within this area.

This dieline represents a current finishing tool. Any alterations to this dieline may incur additional charges.



Mat

Tool No: 3375 & DC0056

Shape: Football Shirt

Cut Size -

Width: 219.5mm

Height: 200mm

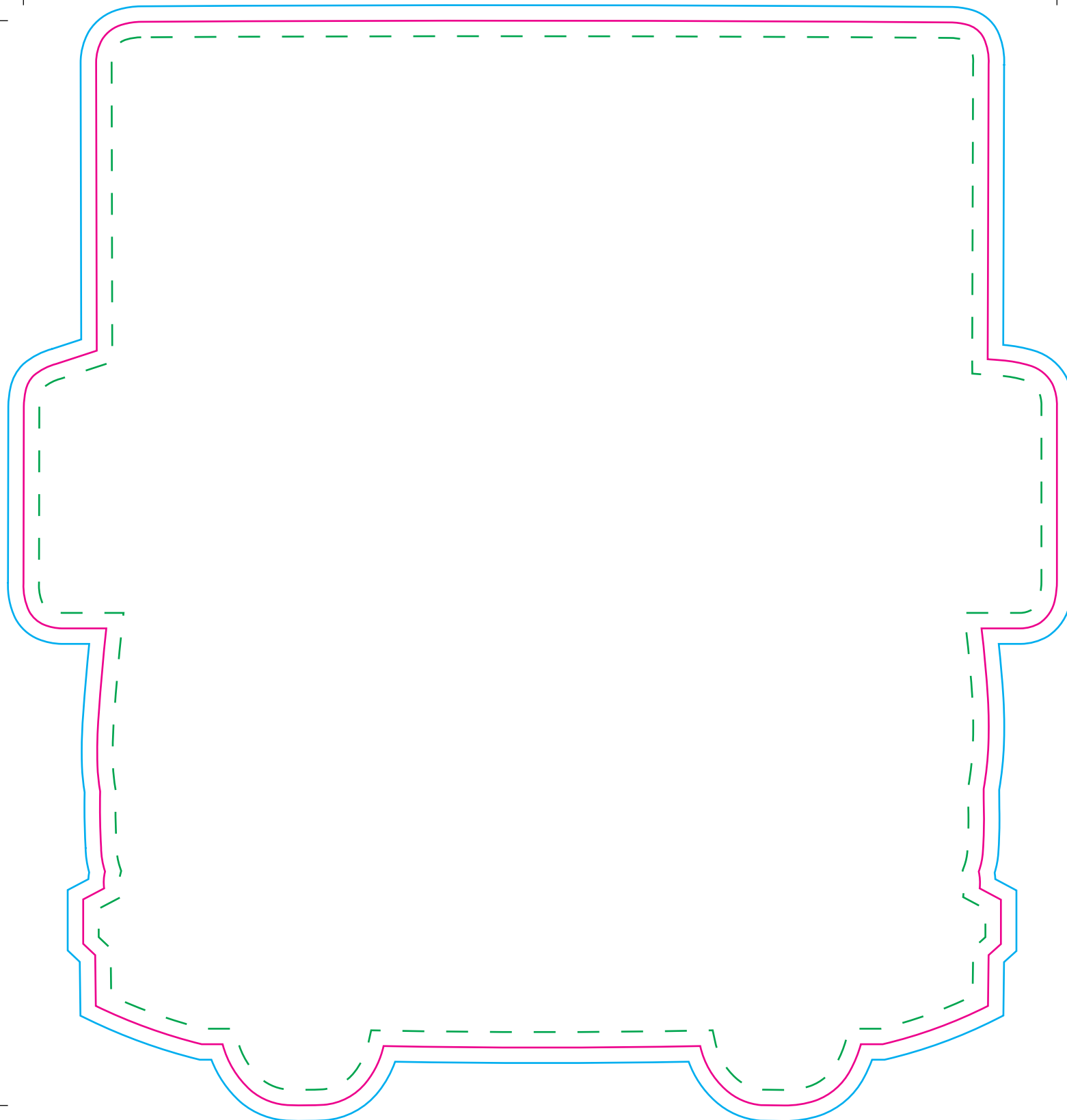
Artwork with Bleed -

Width: 225.5mm

Height: 206mm

- - - Please keep all live matter such as text, logos and other important images within this area.

This dieline represents a current finishing tool. Any alterations to this dieline may incur additional charges.



Mat

Tool No: 3682 & DC0146

Shape: Lorry

Cut Size -

Width: 200mm

Height: 210mm

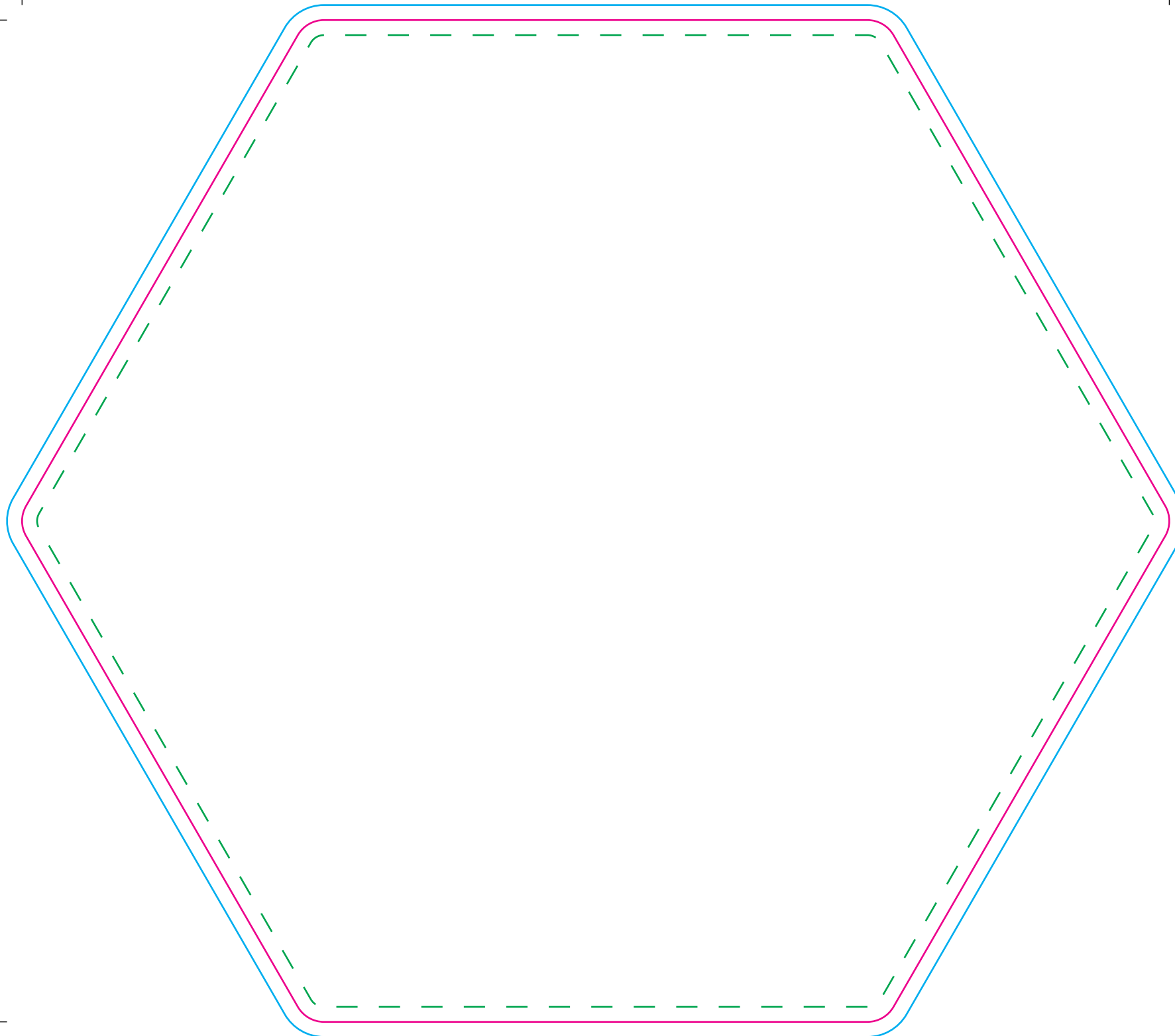
Artwork with Bleed -

Width: 206mm

Height: 216mm

- - - Please keep all live matter such as text, logos and other important images within this area.

This dieline represents a current finishing tool. Any alterations to this dieline may incur additional charges.



Mat

Tool No: 2160 • DC0262 • (2228KA)

Shape: Hexagon

Cut Size -

Width: 229mm

Height: 200mm

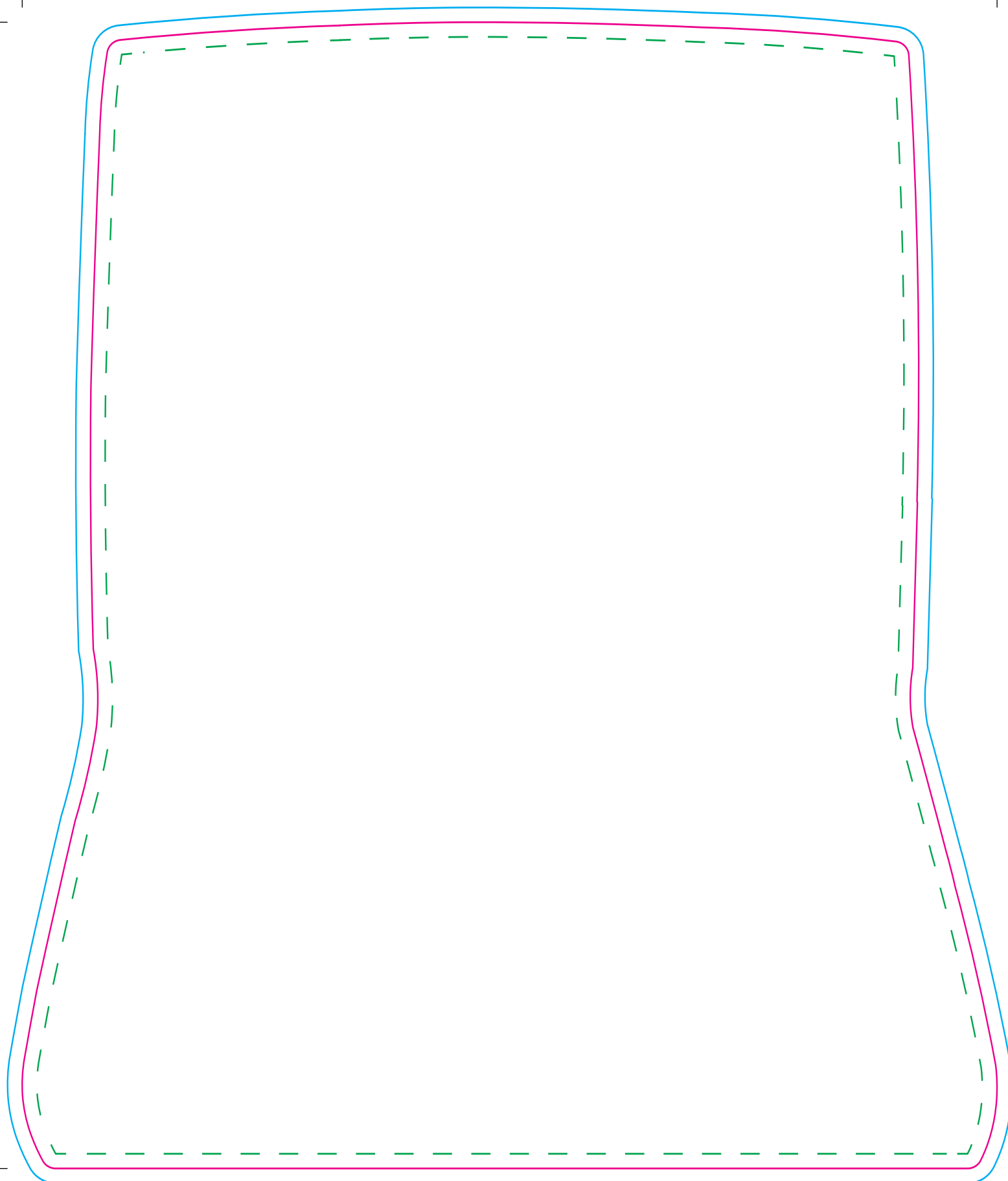
Artwork with Bleed -

Width: 235mm

Height: 206mm

- - - Please keep all live matter such as text, logos and other important images within this area.

This dieline represents a current finishing tool. Any alterations to this dieline may incur additional charges.



Mat

Tool No: 1996 • DC0434

Shape: Laptop

Cut Size -

Width: 199mm

Height: 234mm

Artwork with Bleed -

Width: 205mm

Height: 240mm

- - - Please keep all live matter such as text, logos and other important images within this area.

This dieline represents a current finishing tool. Any alterations to this dieline may incur additional charges.



Mat

Tool No: 3338 • DC0327

Shape: Pillow

Cut Size -

Width: 235mm

Height: 201mm

Artwork with Bleed -

Width: 241mm

Height: 207mm

- - - Please keep all live matter such as text, logos and other important images within this area.

This dieline represents a current finishing tool. Any alterations to this dieline may incur additional charges.